



*Professional manufacturer of
hydraulic bolting tools*



RMC series volume synchronous lifting system - economical



- Adopt double plunger pump system, fast leveling and stable lifting of heavy load.
- High precision up to 0.5mm, synchronous lifting and lowering are under control.
- Flexible control according to working condition, cylinder capacity and number, precision etc.
- Each control point is independent, able to control one or several of them separately.
- Module design, able to control 4, 8, 12 and 16 points, up to 99 points for online control.
- According to working condition, displacement sensor and pressure sensor are optional for real time monitoring.

Technical parameters

Model	Sync points	Rated pressure (MPa)	Rated flow (L/min)	Oil tank (L)	Power (380V 50Hz)	Weight (KG)
RMCD02D	2	70	0.5X2	100	1.5KW	125
RMCD02S	2	70	0.5X2	100	1.5KW	125
RMCD04D	4	70	0.5X4	100	2.2KW	125
RMCD04S	4	70	0.5X4	100	2.2KW	125
RMCD08D	8	70	0.5X8	100	5.5KW	125
RMCD08S	8	70	0.5X8	100	5.5KW	125
RMCD12D	12	70	0.5X12	100	11KW	150
RMCD12S	12	70	0.5X12	100	11KW	150

Rate flow can be customized as request.

Oil tank capacity can be customized as request.

Variable frequency motor with adjustable speed (VFDM) can be selected as request.



PMC series pulse width synchronous lifting system - practical

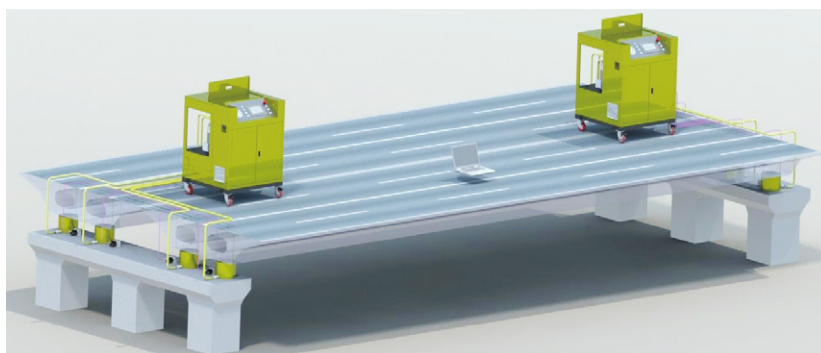


- Adopt double plunger pump system, fast leveling and stable lifting of heavy load.
- High precision up to 0.5mm, synchronous lifting and lowering are under control.
- Flexible control according to working condition, cylinder capacity and number, precision etc.
- Each control point is independent, able to control one or several of them separately.
- Module design, able to control 4, 8, 12 and 16 points, up to 99 points for online control.
- With data storage and recording function, easy to generate a report.
- Variable frequency drive motor(VFDM) and PLC device are optional, to ensure the accurate synchronization and flow control.
- Simple human interface, easy operation.

Technical parameters

Model	Sync points	Rated pressure (MPa)	Rated flow (L/min)		Oil tank (L)	Power (380V 50Hz)	Dimension (mm)	Weight (KG)
			70MPa	6MPa				
PMC04D	4	70	1.13	6	100	1.5KW	780*760*1080	125
PMC04S	4	70	1.13	6	100	1.5KW	780*760*1080	125
PMC08D	8	70	1.13	6	100	1.5KW	780*760*1080	125
PMC08S	8	70	1.13	6	100	1.5KW	780*760*1080	125
PMC12D	12	70	1.13	6	100	1.5KW	780*760*1080	125
PMC12S	12	70	1.13	6	100	1.5KW	780*760*1080	125
PMC16D	16	70	1.93	10	100	2.2KW	780*760*1080	150
PMC16S	16	70	1.93	10	100	2.2KW	780*760*1080	150

System connection schematic



FMCS series variable frequency synchronous control system



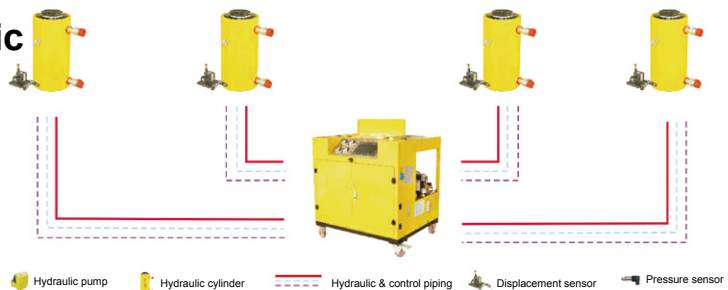
- Adopt double plunger pump system, achieve fast leveling and stable lifting of heavy load.
- Controlled by computer, no need human intervention, automatic testing of lifting status.
- High precision up to 0.1mm, synchronous lifting and lowering are under control.
- Each control point is independent, able to control one or several of them separately.
- Main components are from famous international brands, all seals are imported.
- Applicable to match single or double acting cylinder.

- Use quick connectors between hydraulic piping, cylinder and pump, easy operation.
- Displacement sensor and pressure sensor are optional for real time monitoring.
- VFDM technology adjusts flow by continuously changing motor speed, realizing true sense of continuous flow adjustment, so the stability and reliability are better than other similar systems.

Technical parameters

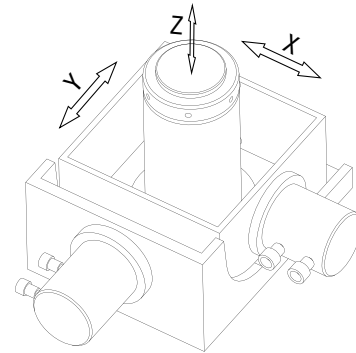
Model	Sync points	Rated pressure (MPa)	Rated flow (L/min)		Oil tank (L)	Power (380V 50Hz)	Dimension (mm)	Weight (KG)
			70MPa	6MPa				
FMCS02	2	70	2X1.13	2X6	100	1.5KW	1050*870*1080	125
FMCS04	4	70	4X1.13	4X6	100	1.5KW	1050*870*1080	125
FMCS08	8	70	8X1.13	8X6	100	1.5KW	1050*870*1080	125
FMCS12	12	70	12X1.13	12X6	100	1.5KW	1050*870*1080	125
FMCS16	16	70	16X1.13	16X6	100	1.5KW	1050*870*1080	125
FMCS20	20	70	20X1.13	20X6	100	1.5KW	1050*870*1080	125
FMCS24	24	70	24X1.13	24X6	100	1.5KW	1050*870*1080	150

System connection schematic

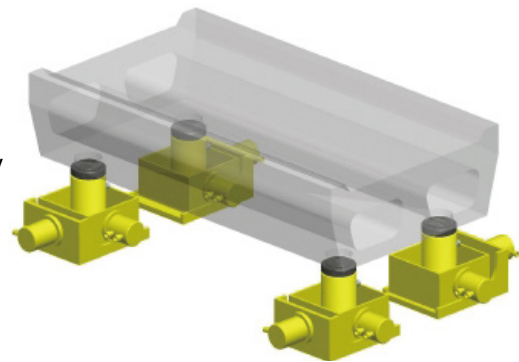


3DCS series three dimensional lifting system

This system is mainly used for low height short distance vertical displacement (Y), horizontal displacement (X) and longitudinal displacement (Z) in the fields of hull welding, railway bridge, highway bridge or similar beam type heavy load. The sliding friction pairs are made of cylinder base, stainless slide plate of vertical cylinder base and PTFE plate at the bottom of vertical cylinder base, low friction coefficient and stable movement.



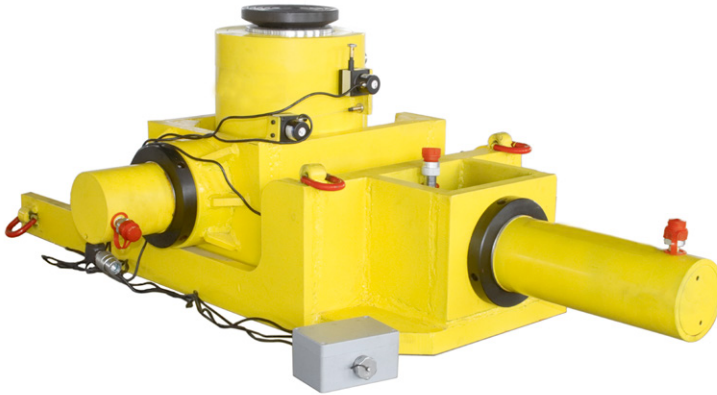
- Large loading capacity, capable of working for 100 ton to 6000 ton heavy load.
- High precision up to 0.5mm, synchronous lifting and lowering are under control.
- Flexible control according to working condition, cylinder capacity and number, precision etc.
- Each control point is independent, able to control one or several of them separately.
- Module design, able to control 4, 8, 12 and 16 points, up to 99 points for online control.
- With data storage and recording function, easy to generate a report.
- Simple human interface, easy operation, high level of automation.



Technical parameters

Model	Direction	Capacity (T)	Rated pressure (MPa)	Stroke (mm)	Effective area (cm ²)	Oil capacity (cm ³)	Weight (KG)
3DCS100	Y	100	70	200	132.7	2655	312
	X	30		100	42.1	400	
	Z	30		100	42.1	400	
3DCS200	Y	200	70	200	256.9	5318	519
	X	50		100	77	770	
	Z	50		100	77	770	
3DCS300	Y	300	70	200	456.2	9124	738
	X	75		100	102.6	1067	
	Z	75		100	102.6	1067	
3DCS500	Y	500	70	200	730.6	14612	1904
	X	150		100	198.6	1986	
	Z	150		100	198.6	1986	
3DCS800	Y	800	70	200	1176.3	23524	3858
	X	200		100	256.9	2660	
	Z	200		100	256.9	2660	
3DCS1000	Y	1000	70	200	1465.7	29316	5366
	X	300		100	456.2	4562	
	Z	300		100	456.2	4562	

Intelligent walking type lifting and pushing system



Walking type lifting and pushing cylinder is a professional adjusting equipment which is designed for 3D accurate positioning of large machinery. It can be used for multi pivots displacement control of railway, bridge or similar situations, to achieve accurate positioning of X axis adjustment, Y axis pushing and Z axis lifting. It has the features of high lifting load, high accuracy, easy operation and high level of automation.

Technical parameters

Model	Direction	Capacity (T)	Stroke (mm)	Rated pressure (MPa)	Effective area (cm ²)	Weight (KG)
3DCS-100W	Y	300	200	70	452	710
	X	50	100		78.5	
	Z	50	500		78.5	
3DCS-200W	Y	600	200	70	855	1280
	X	100	100		132.7	
	Z	100	500		132.7	

Application



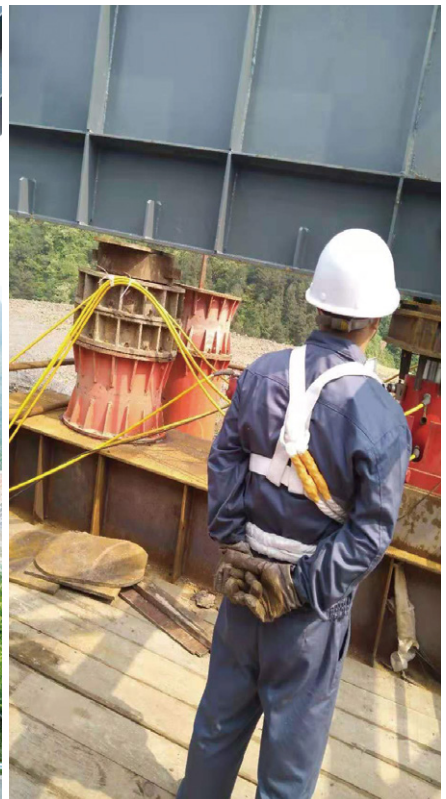
Features

1. Specially designed for heavy duty components like bridge.
2. Computer controlled displacements of 3 directions, it can achieve X axis adjustment, Y axis pushing and Z axis lifting automatically.
3. Real time displacement and pressure monitoring, displacement synchronization accuracy is within 2mm.
4. Touch screen, friendly user interface, easy operation.
5. Standard module connection and communication cables connection, easy to manage on site.
6. Single hydraulic pump can match four sets walking type systems at most.
7. Use the combination of several hydraulic pumps and walking type systems, and portable electrical operation control device to achieve mu pivots lifting and pushing of long span heavy duty components.



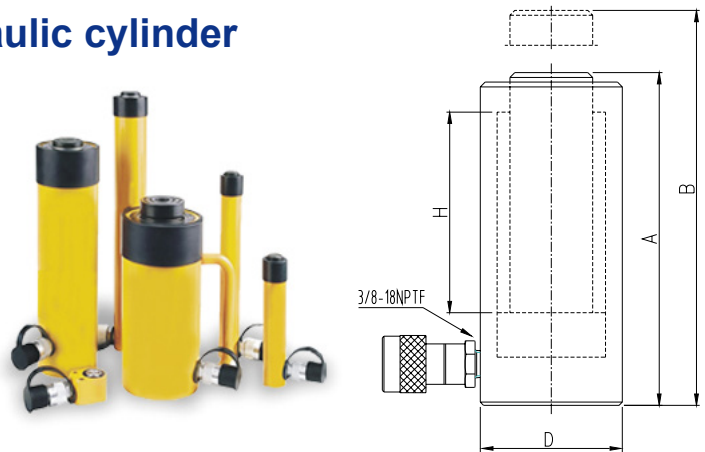
Technical parameters

Sync points	Model	Rated pressure (MPa)	Rated flow (L/min)		
2	3DCS-S2	70	2	4	2
4	3DCS-S4	70	2	8	2



RC series single acting hydraulic cylinder

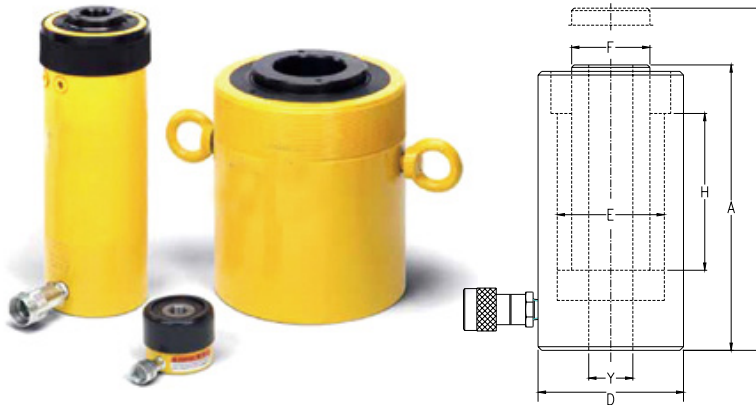
- Hard chrome plating piston, to avoid scratch and corrosion.
- Anti-corrosion painted surface.
- Dustproof ring extends the service life.
- Single acting, spring return



Technical parameters

Capacity ton(KN)	Stroke H(mm)	Model	Effective area (mm ²)	Oil capacity (mm ³)	Collapsed height A(mm)	Extended height B(mm)	Outside diameter D(mm)	Weight (kg)
5 (45)	16	RC05-16	6.5	10	41	57	38	1
	25	RC05-25		16	110	135		1.2
	76	RC05-76		50	165	241		1.5
	127	RC05-127		83	215	342		1.9
	177	RC05-177		115	273	450		2.4
	232	RC05-232		151	323	555		2.8
10 (101)	26	RC10-26	14.5	38	89	115	57	1.8
	54	RC10-54		78	121	175		2.3
	105	RC10-105		152	171	276		3.3
	156	RC10-156		226	247	403		4.4
	203	RC10-203		294	298	501		5.4
	257	RC10-257		373	349	606		6.4
	304	RC10-304		441	400	704		6.8
356	RC10-356	516	450	806	8.2			
15 (142)	25	RC15-25	20.3	51	124	149	69	3.3
	51	RC15-51		104	149	200		4.1
	101	RC15-101		205	200	301		5
	152	RC15-152		308	271	423		6.8
	203	RC15-203		411	322	525		8.2
	254	RC15-254		516	373	627		9.5
	305	RC15-305		619	423	728		10.9
	356	RC15-356		723	474	830		11.8
25 (232)	26	RC25-26	33.2	86	139	165	85	5.9
	50	RC25-50		166	165	215		6.4
	102	RC25-102		339	215	317		8.2
	158	RC25-158		525	273	431		10
	210	RC25-210		697	323	533		12.2
	261	RC25-261		867	374	635		14.1
	311	RC25-311		1033	425	736		16.3
	362	RC25-362		1202	476	838		17.7
30 (295)	209	RC30-209	42.1	880	387	596	101	18.1
50 (498)	51	RC50-51	71.2	362	176	227	127	15
	101	RC50-101		719	227	328		19.1
	159	RC50-159		1131	282	441		23.1
	337	RC50-337		2399	460	797		37.6
75 (718)	156	RC75-156	102.6	1601	285	441	146	29.5
	333	RC75-333		3417	492	825		59
100 (933)	168	RC100-168	133.3	2239	357	525	177	59
	260	RC100-260		3466	449	709		72.6

RCH series single acting hollow cylinder

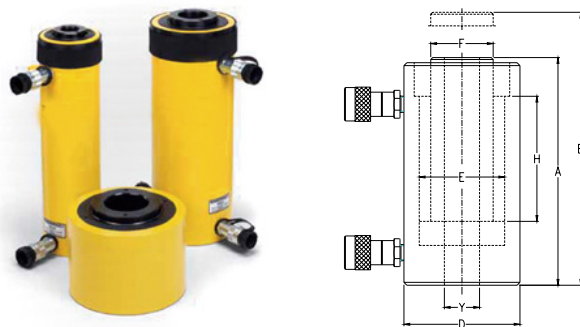


- Single acting, spring return.
- Anti-corrosion painted surface.
- Equipped with 3/8 NPT coupler and protection cap.
- Hard chrome plating piston, to avoid scratch and corrosion.

Technical parameters

Capacity ton(KN)	Stroke H(mm)	Model	Effective area (cm ²)	Oil capacity (cm ³)	Collapsed height (Amm)	Extended height B(mm)	Outside diameter D(mm)	Bore diameter E(mm)	Plunger diameter F(mm)	Hole diameter Y(mm)	Weight kg
13(125)	8	RCH13-8	17.9	14	55	63	69	54	35.1	19.6	1.5
	42	RCH13-42	17.9	75	120	162	69	54	35.1	19.6	2.8
	76	RCH13-76	17.9	136	184	260	69	54	35.1	19.6	4.4
20(215)	49	RCH20-49	30.7	150	162	211	98	73	54.1	26.9	7.7
	155	RCH20-55	30.7	476	306	461	98	73	54.1	26.9	14.1
30(326)	64	RCH30-64	46.6	298	178	242	114	89	63.5	33.3	10.9
	155	RCH30-155	46.6	722	330	485	114	89	63.5	33.3	21.8
60(576)	76	RCH60-76	82.3	626	247	323	159	124	91.9	53.8	28.1
	153	RCH60-153	82.3	1259	323	476	159	124	91.9	53.8	35.4
100(931)	76	RCH100-76	133.0	1011	254	330	212	165	127.0	79	63.0

RRH series double acting hollow cylinder



- Hollow plunger design, applicable to pushing or pulling.
- Anti-corrosion painted surface.
- Equipped with 3/8 NPT coupler and protection cap.
- Longer stroke can be customized as request.

Technical parameters

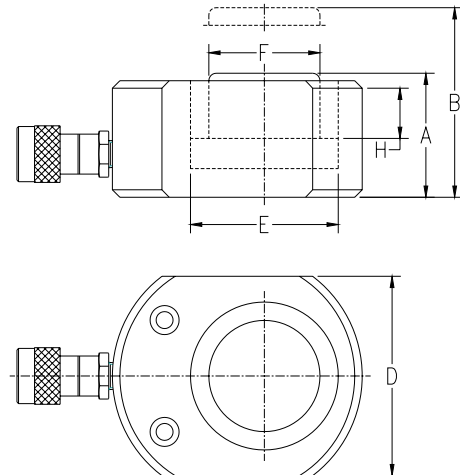
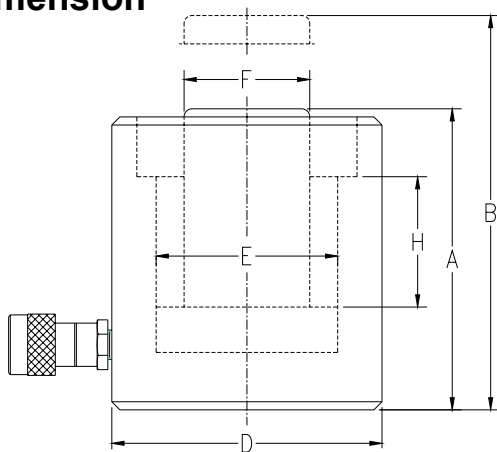
Capacity ton(KN)	Stroke H(mm)	Model	Cylinder max capacity(KN)		Effective area (cm ²)		Oil capacity (cm ³)		Collapsed height A(mm)	Extended height B(mm)	Outside diameter D(mm)	Bore diameter E(mm)	Plunger diameter F(mm)	Hole diameter Y(mm)	Weight kg
			Advance	Retract	Advance	Retract	Advance	Retract							
30	178	RRH30-178	326	213	46.6	30.4	829	541	330	508	114	89	65	33.3	21
	258	RRH30-258	326	213	46.6	30.4	1202	784	431	689	114	89	65	33.3	27
60	89	RRH60-89	576	380	82.3	54.2	733	482	247	336	159	124	92	53.8	28
	166	RRH60-166	576	380	82.3	54.2	1366	900	323	489	159	124	92	53.8	35
	257	RRH60-257	576	380	82.3	54.2	2115	1393	438	695	159	124	92	53.8	45
100	38	RRH100-38	931	612	133	87.4	505	333	165	203	212	165	127	79.2	33
	76	RRH100-76	931	612	133	87.4	1011	666	254	330	212	165	127	79.2	61
	153	RRH100-153	931	612	133	87.4	2035	1337	342	495	212	165	127	79.2	79
	257	RRH100-257	931	612	133	87.4	3402	2246	460	717	212	165	127	79.2	106
150	76	RRH150-76	1429	718	204.1	102.6	4144	2083	349	552	247	190	152	79.2	111

RSM/RCS series Thin hydraulic cylinder



- Compact flat design, suitable for limited space operation.
- Hard chrome plating piston, to avoid scratch and corrosion.
- Anti-corrosion painted surface.
- Dustproof ring extends the service life.
- Spring return piston is optional.

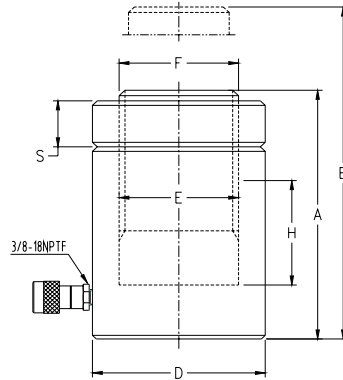
Dimension



Technical parameters

Capacity ton(KN)	Stroke H(mm)	Model	Effective area (cm ²)	Oil capacity (cm ³)	Collapsed height A(mm)	Extended height B(mm)	Outside diameter D(mm)	Bore diameter E(mm)	Plunger diameter F(mm)	Weight (Kg)
5(45)	6	RSM5-6	6.5	4	32	38	58×41	28.7	19.5	1.0
10(101)	12	RSM10-12	14.5	18	42	54	82×55	42.9	21.5	1.4
20(201)	11	RSM20-11	28.7	32	51	62	101×76	60.5	27.5	3.1
30(295)	13	RSM30-13	42.1	55	58	71	117×95	73.2	39.5	4.5
50(435)	16	RSM50-16	62.2	99	66	82	140×114	89	44.5	6.8
75(714)	16	RSM75-16	102	164	79	95	165×139	114	62	11.3
100(886)	16	RSM100-16	126.6	203	85	101	178×153	127	65	14.5
150(1386)	16	RSM150-16	198.1	317	100	116	215×190	159	80	26.3
10(101)	38	RCS10-38	14.5	55	88	126	69	42.9	38.1	4.1
20(201)	45	RCS20-45	28.7	129	98	143	92	60.5	50.8	5.0
30(295)	62	RCS30-62	42.1	261	117	179	101	73.2	66.5	6.8
50(435)	60	RCS50-60	62.2	373	122	182	124	89	69.8	10.9
100(886)	57	RCS100-57	126.6	722	141	198	165	127	92.2	22.7

CLL series single acting lock nut cylinder

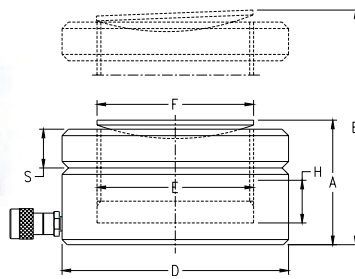


- Single acting, load return.
- Lock nut type, suitable for long time work.
- Overflow hole also has stroke limiting function.
- Cylinder can bear 5% lateral load.

Technical parameters

Capacity ton(KN)	Stroke H(mm)	Model	Effective area cm ²	Oil capacity cm ³	Collapsed height A(mm)	Extended height B(mm)	Outside diameter D(mm)	Bore diameter E(mm)	Plunger diameter F(mm)	Nut height S(mm)	Weight (kg)
50 (496)	50	CLL50-50	70.9	355	164	214	125	95	Tr95×4	38	15
	100	CLL50-100	70.9	709	214	314	125	95	Tr95×4	38	20
	150	CLL50-150	70.9	1064	264	414	125	95	Tr95×4	38	25
	200	CLL50-200	70.9	1418	314	514	125	95	Tr95×4	38	30
	250	CLL50-250	70.9	1773	364	614	125	95	Tr95×4	38	35
100 (929)	300	CLL50-300	70.9	2127	414	714	125	95	Tr95×4	38	40
	50	CLL100-50	132.7	664	187	237	165	130	Tr130×6	45	30
	100	CLL100-100	132.7	1327	237	337	165	130	Tr130×6	45	39
	150	CLL100-150	132.7	1991	287	437	165	130	Tr130×6	45	48
	200	CLL100-200	132.7	2654	337	537	165	130	Tr130×6	45	56
150 (1406)	250	CLL100-250	132.7	3318	387	637	165	130	Tr130×6	45	64
	300	CLL100-300	132.7	3981	437	737	165	130	Tr130×6	45	73
	50	CLL150-50	200.9	1005	209	259	207	160	Tr160×6	47	53
	100	CLL150-100	200.9	2010	259	359	207	160	Tr160×6	47	66
	150	CLL150-150	200.9	3014	309	459	207	160	Tr160×6	47	78
200 (1880)	200	CLL150-200	200.9	4019	359	559	207	160	Tr160×6	47	92
	250	CLL150-250	200.9	5024	409	659	207	160	Tr160×6	47	104
	300	CLL150-300	200.9	6029	459	759	207	160	Tr160×6	47	117
	50	CLL200-50	268.6	1343	243	293	237	185	Tr185×6	52	83
	100	CLL200-100	268.6	2687	293	393	237	185	Tr185×6	52	98
250 (2540)	150	CLL200-150	268.6	4030	343	493	237	185	Tr185×6	52	117
	300	CLL200-300	268.6	8060	493	793	237	185	Tr185×6	52	170
	50	CLL250-50	362.8	1814	249	299	275	215	Tr215×6	58	116
	100	CLL250-100	362.8	3629	299	399	275	215	Tr215×6	58	135
	150	CLL250-150	362.8	5443	349	499	275	215	Tr215×6	58	162
300 (3165)	300	CLL250-300	362.8	10886	499	799	275	215	Tr215×6	58	234
	50	CLL300-50	452.2	2261	295	345	310	240	Tr240×6	65	173
	100	CLL300-100	452.2	4522	345	445	310	240	Tr240×6	65	203
	150	CLL300-150	452.2	6782	395	545	310	240	Tr240×6	65	233
	300	CLL300-300	452.2	13565	545	845	310	240	Tr240×6	65	323
400 (3859)	50	CLL400-50	551.2	2756	335	385	350	265	Tr265×6	75	250
	100	CLL400-100	551.2	5513	385	485	350	265	Tr265×6	75	225
	150	CLL400-150	551.2	8269	435	585	350	265	Tr265×6	75	327
	300	CLL400-300	551.2	16538	585	885	350	265	Tr265×6	75	441
	500 (5118)	50	CLL500-50	731.1	3653	375	725	400	305	Tr305×6	85
100		CLL500-100	731.1	7302	425	825	400	305	Tr305×6	85	415
150		CLL500-150	731.1	10959	475	925	400	305	Tr305×6	85	466
300		CLL500-300	731.1	20930	625	1225	400	305	Tr305×6	85	617
600 (5984)		50	CLL600-50	854.8	4277	395	445	430	330	Tr330×6	95
	100	CLL600-100	854.8	8554	445	545	430	330	Tr330×6	95	505
	150	CLL600-150	854.8	12830	495	645	430	330	Tr330×6	95	562
	300	CLL600-300	854.8	25650	645	945	430	330	Tr330×6	95	737
	800 (8145)	50	CLL800-50	1163.5	5818	455	505	505	385	Tr385×6	105
100		CLL800-100	1163.5	11636	505	605	505	385	Tr385×6	105	789
150		CLL800-150	1163.5	17453	555	705	505	385	Tr385×6	105	870
300		CLL800-300	1163.5	34907	705	1005	505	385	Tr385×6	105	1110
1000 (10160)		50	CLL1000-50	1451.4	7257	495	545	560	430	Tr430×6	118
	150	CLL1000-150	1451.4	21772	595	745	560	430	Tr430×6	118	1141
	300	CLL1000-300	1451.4	73544	745	1045	560	430	Tr430×6	118	1430

CLP series thin lock nut hydraulic cylinder

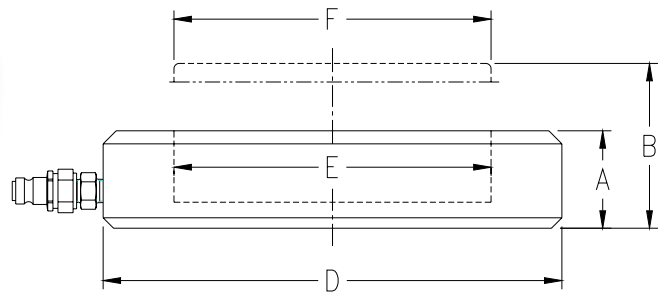


- Compact structure.
- Hard chrome plating piston, to avoid scratch and corrosion.
- Safe lock nut design, suitable for mechanical load support.
- Capable of bearing unbalance loading up to 3% of rated load, no crushing damage.

Technical parameters

Capacity ton(kN)	Stroke H(mm)	Model	Effective area (cm ²)	Oil capacity (cm ³)	Collapsed height A(mm)	Extended height B(mm)	Outside diameter D(mm)	Bore diameter E(mm)	Plunger diameter F(mm)	Nut height S(mm)	Weight kg
50(606)	50	CLP50	86.6	432	125	175	140	105	Tr105×4	30	15
100(1001)	50	CLP100	143.1	715	137	187	175	135	Tr135×6	32	26
150(1588)	45	CLP150	226.8	1021	148	193	220	170	Tr170×6	42	44
200(2198)	45	CLP200	283.4	1275	155	200	245	190	Tr190×6	44	57
250(2540)	45	CLP250	362.9	1633	159	204	275	215	Tr215×6	46	74
400(3858)	45	CLP400	551.3	2481	178	223	350	265	Tr265×6	58	134
500(5111)	45	CLP500	730.2	3286	192	237	400	305	Tr305×6	65	189

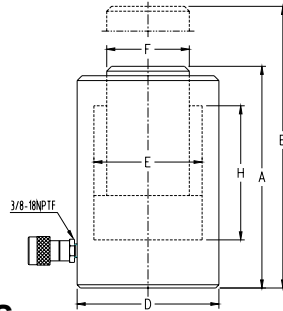
RTC series extra-high pressure thin jack



Technical parameters

Capacity ton(KN)	Stroke H(mm)	Model	Effective area (cm ²)	Oil capacity (cm ³)	Collapsed height A(mm)	Extended height B(mm)	Outside diameter D(mm)	Bore diameter E(mm)	Return	Weight kg
5	10	RTC05	3.46	34.6	30	35	60	21	Load return	0.67
10	10	RTC10	7.07	70.7	30	40	70	30	Load return	0.9
25	10	RTC25	17.34	173.4	30	40	90	47	Load return	1.49
50	10	RTC50	38.46	384.6	30	40	118	70	Load return	2.43
100	10	RTC100	69.36	693.6	33	43	152	94	Load return	3.81
150	10	RTC150	105.63	1056.3	34	44	180	116	Load return	5.88
200	10	RTC200	136.79	1367.9	35	45	204	132	Load return	8.15

DS series single acting high tonnage hydraulic cylinder

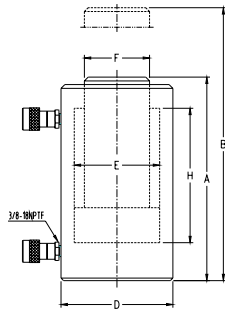


- Single acting, load return.
- Hard chrome plating piston, to avoid scratch and corrosion.
- Anti-corrosion painted surface.
- Dustproof ring extends the service life.
- Cylinder can bear 5% lateral load.

Technical parameters

Capacity ton(KN)	Stroke	Model	Effective area cm ²	Oil capacity cm ³	Collapsed height	Extended height	Outside diameter	Bore diameter	Plunger diameter	Weight
	H(mm)				A(mm)	B(mm)	D(mm)	E(mm)	F(mm)	kg
50	50	DS50-50	78.5	392.5	162	212	140	100	70	17
	100	DS50-100	78.5	785	212	312	140	100	70	21
	150	DS50-150	78.5	1177.5	262	412	140	100	70	27
	200	DS50-200	78.5	1570	312	512	140	100	70	32
	250	DS50-250	78.5	1962.5	362	612	140	100	70	36
100	300	DS50-300	78.5	2355	412	712	140	100	70	39
	50	DS100-50	153.9	769	182	232	180	140	100	32
	100	DS100-100	153.9	1539	232	332	180	140	100	40
	150	DS100-150	153.9	2308	282	432	180	140	100	48
	200	DS100-200	153.9	3077	332	532	180	140	100	56
150	250	DS100-250	153.9	3846	382	632	180	140	100	64
	300	DS100-300	153.9	4615	432	732	180	140	100	72
	50	DS150-50	201	1005	196	246	216	160	115	42
	100	DS150-100	201	2010	246	346	216	160	115	52
	150	DS150-150	201	3014	296	446	216	160	115	62
200	200	DS150-200	201	4019	346	546	216	160	115	72
	250	DS150-250	201	5024	396	646	216	160	115	72
	300	DS150-300	201	6029	446	746	216	160	115	91
	50	DS200-50	314	1570	216	266	268	200	150	62
	150	DS200-150	314	4710	316	466	268	200	150	92
250	200	DS200-200	314	6280	366	566	268	200	150	107
	300	DS200-300	314	9420	466	766	268	200	150	137
	100	DS250-100	363	3629	265	365	285	215	165	123
300	150	DS250-150	363	5443	335	485	285	215	165	141
	200	DS250-200	363	7257	385	585	285	215	165	159
	300	DS250-300	363	10886	485	785	285	215	165	195
400	100	DS300-100	452	4522	362	462	320	240	190	237
	150	DS300-150	452	6782	412	562	320	240	190	261
	200	DS300-200	452	9043	462	662	320	240	190	285
	300	DS300-300	452	13564	562	862	320	240	190	333
500	100	DS400-100	572	5723	425	525	367	270	220	293
	150	DS400-150	572	8584	475	625	367	270	220	332
	200	DS400-200	572	11445	525	725	367	270	220	362
	300	DS400-300	572	17168	625	925	367	270	220	421
600	100	DS500-100	707	7065	469	569	400	300	240	316
	150	DS500-150	707	10597	519	669	400	300	240	480
	200	DS500-200	707	14130	569	869	400	300	240	433
	300	DS500-300	707	21195	669	969	400	300	240	599
	500	DS500-500	707	35325	869	1369	400	300	240	782
800	100	DS600-100	855	8548	479	549	445	330	270	791
	150	DS600-150	855	12823	529	679	445	330	270	565
	200	DS600-200	855	17097	579	779	445	330	270	637
	300	DS600-300	855	25646	679	979	445	330	270	701
	500	DS600-500	855	42723	879	1379	445	330	270	815
1000	100	DS800-100	1194	11940	524	624	550	390	320	766
	150	DS800-150	1194	17910	574	724	550	390	320	868
	200	DS800-200	1194	23880	624	824	550	390	320	996
	300	DS800-300	1194	35820	724	1024	550	390	320	1058
	500	DS800-500	1194	59699	924	1424	550	390	320	1274
1000	100	DS1000-100	1451	14515	614	714	600	430	350	1022
	150	DS1000-150	1451	21772	664	814	600	430	350	1194
	200	DS1000-200	1451	29029	714	914	600	430	350	1267
	300	DS1000-300	1451	43544	814	1114	600	430	350	1486

DQ series double acting high tonnage hydraulic cylinder



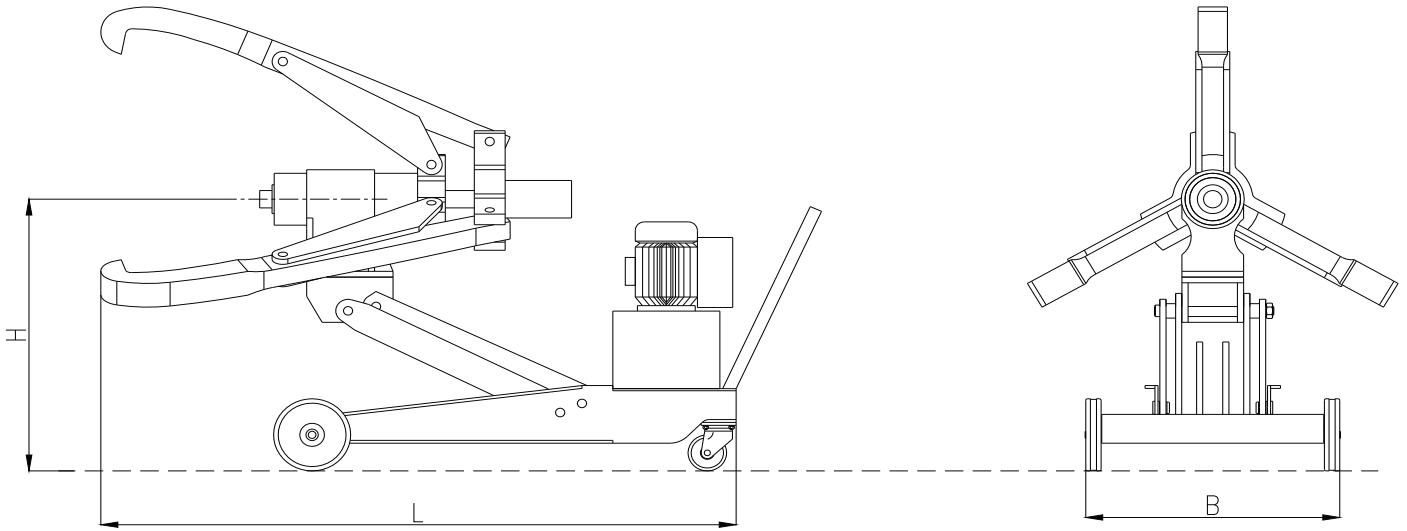
- Double acting, hydraulic return, applicable for pushing and pulling.
- Hard chrome plating piston, to avoid scratch and corrosion.
- Anti-corrosion painted surface.
- Capable of bearing unbalance loading up to 5% of rated load, no crushing damage.
- Equipped with 3/8 NPT coupler and protection cap.

Capacity ton(KN)	Stroke H(mm)	Model	Effective area		Oil capacity		Collapsed height A(mm)	Extended height B(mm)	Outside diameter D(mm)	Bore diameter E(mm)	Plunger diameter F(mm)	Weight kg
			Advance cm ²	Retract cm ²	Advance cm ³	Retract cm ³						
50	50	DQ50 -50	78.5	40	392.5	200	193	243	140	100	70	18
	100	DQ50 -100	78.5	40	785	400	243	343	140	100	70	23
	150	DQ50 -150	78.5	40	1177.5	600	293	443	140	100	70	28
	200	DQ50 -200	78.5	40	1570	800	343	543	140	100	70	33
	250	DQ50 -250	78.5	40	1962.5	1000	393	643	140	100	70	38
	300	DQ50 -300	78.5	40	2355	1200	443	743	140	100	70	42
100	50	DQ100 -50	153.9	75.4	769	377	208	258	180	140	100	34
	100	DQ100 -100	153.9	75.4	1539	754	258	358	180	140	100	42
	150	DQ100 -150	153.9	75.4	2308	1131	308	458	180	140	100	50
	200	DQ100 -200	153.9	75.4	3077	1508	358	558	180	140	100	58
	250	DQ100 -250	153.9	75.4	3846	1885	408	658	180	140	100	66
	300	DQ100 -300	153.9	75.4	4615	2262	458	758	180	140	100	74
150	50	DQ150 -50	201	97.1	1005	486	237	287	216	160	115	47
	100	DQ150 -100	201	97.1	2010	971	287	337	216	160	115	57
	150	DQ150 -150	201	97.1	3014	1457	337	387	216	160	115	67
	200	DQ150 -200	201	97.1	4019	1943	387	437	216	160	115	77
	250	DQ150 -250	201	97.1	5024	2429	437	487	216	160	115	87
	300	DQ150 -300	201	97.1	6029	2914	487	537	216	160	115	97
200	50	DQ200 -50	314	137.4	1570	687	265	315	268	200	150	82
	150	DQ200 -150	314	137.4	4710	2061	365	515	268	200	150	112
	200	DQ200 -200	314	137.4	6280	2748	415	615	268	200	150	127
	300	DQ200 -300	314	137.4	9420	4122	515	815	268	200	150	157
	100	DQ250 -100	363	149	3629	1619	323	423	285	215	165	123
	150	DQ250 -150	363	149	5443	2429	373	523	285	215	165	141
250	200	DQ250 -200	363	149	7257	3238	423	623	285	215	165	159
	300	DQ250 -300	363	149	10886	4857	523	823	285	215	165	195
	100	DQ300 -100	452	168.8	4522	1687	345	445	320	240	190	237
	150	DQ300 -150	452	168.8	6782	2531	395	545	320	240	190	261
	200	DQ300 -200	452	168.8	9043	3375	445	645	320	240	190	285
	300	DQ300 -300	452	168.8	13564	5063	545	845	320	240	190	333
400	100	DQ400 -100	572	192	5723	1923	427	527	367	270	220	310
	150	DQ400 -150	572	192	8584	2885	477	627	367	270	220	342
	200	DQ400 -200	572	192	11445	3847	527	727	367	270	220	374
	300	DQ400 -300	572	192	17168	5770	627	927	367	270	220	438
	100	DQ500 -100	707	254	7065	2543	474	574	400	300	240	433
	150	DQ500 -150	707	254	10597	3815	524	674	400	300	240	478
500	200	DQ500 -200	707	254	14130	5087	574	774	400	300	240	521
	300	DQ500 -300	707	254	21195	7630	674	974	400	300	240	613
	500	DQ500 -500	707	254	35325	12717	874	1374	400	300	240	792
	100	DQ600 -100	855	283	8548	2826	484	584	445	330	270	550
	150	DQ600 -150	855	283	12823	4239	534	684	445	330	270	601
	200	DQ600 -200	855	283	17097	5652	584	784	445	330	270	668
600	300	DQ600 -300	855	283	25646	8478	684	984	445	330	270	711
	500	DQ600 -500	855	283	42723	14130	884	1384	445	330	270	904
	100	DQ800 -100	1194	390	11940	3901	539	639	550	390	320	872
	150	DQ800 -150	1194	390	17910	5852	589	739	550	390	320	988
	200	DQ800 -200	1194	390	23880	7803	639	839	550	390	320	1092
	300	DQ800 -300	1194	390	35820	11704	739	1039	550	390	320	1176
800	500	DQ800 -500	1194	390	59699	19507	939	1439	550	390	320	1355
	100	DQ1000 -100	1451	490	14515	4898	614	714	600	430	350	1105
	150	DQ1000 -150	1451	490	21772	7348	664	814	600	430	350	1210
	200	DQ1000 -200	1451	490	29029	9797	714	914	600	430	350	1315
	300	DQ1000 -300	1451	490	43544	14695	814	1114	600	430	350	1528
	100	DQ1500 -100	2205	949	22050	9491	835	935	790	530	400	3070
1500	200	DQ1500 -200	2205	949	44101	18981	935	1135	790	530	400	3550
	300	DQ1500 -300	2205	949	66151	28472	1035	1335	790	530	400	3940
	500	DQ1500 -500	2205	949	110252	47453	1235	1735	790	530	400	5450
	100	DQ2000 -100	2921	11123	29210	11124	953	1053	910	610	480	4790
	200	DQ2000 -200	2921	11123	58420	22247	1053	1253	910	610	480	5210
	300	DQ2000 -300	2921	11123	87630	33371	1153	1453	910	610	480	5715
2000	500	DQ2000 -500	2921	11123	146050	55618	1353	1853	910	610	480	7820

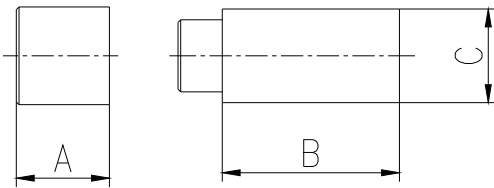
Automatic 3-Jaw Hydraulic Bearing Puller

- HAC-series automatic vehicle-mounted hydraulic puller, automatic hydraulic design, automatic hydraulic lifting, automatic clamping tooling, automatic pulling.
- Pulling wheel structure is with three-jaw design. Pull arm/pull claw is made of ultra-high-strength alloy steel. Double-acting hydraulic cylinder design.
- Hydraulic pump station built-in safety valve, maximum working pressure is 70MPa.
- Wheeled trolley for easy mobility.
- Can be configured with an extension head to increase the length of the piston





Compensation lever specifications



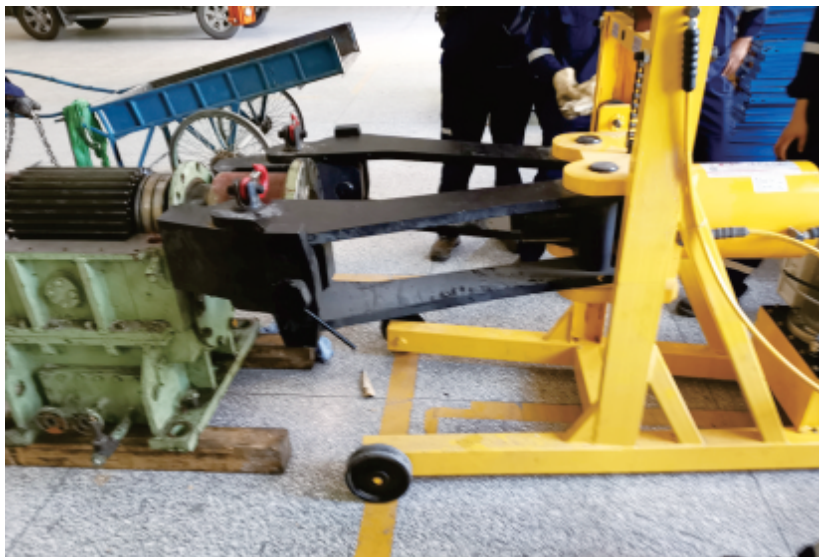
Model	HAC50	HAC100	HAC150
A (mm)	150	100	100
B (mm)	250	150	150
C (mm)	70	100	115

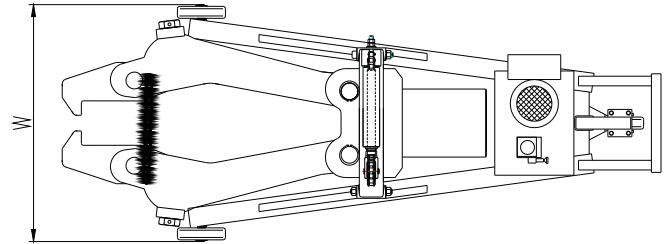
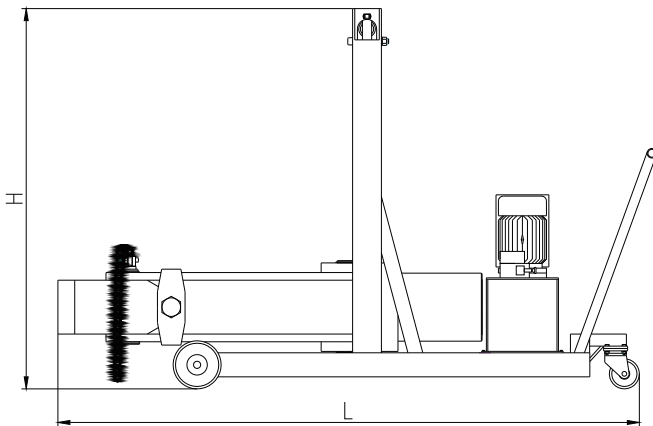
Technical parameters

Model	Puller Capacity T (Ton)	Cylinder Stroke (mm)	Length L(mm)	Width (mm)	Adjustable Height of Puller Center H(mm)	Minimum Opening mm	Pulling depth at min opening mm	Maximum Opening mm	Pulling depth at max opening mm	Power Source
HAC 50	50	337	2170	824	590-1165	150	675	1100	530	380V/ 50Hz
HAC 100	100	250	2295	824	730-1228	150	510	1100	425	
HAC 150	150	250	2573	1150	820-1315	200	630	1100	473	

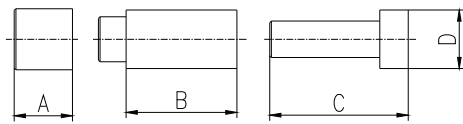
2-Jaw Hydraulic Bearing Puller

- HCP-series automatic vehicle-mounted hydraulic puller,the puller structure with two-claw design is simple and convenient to operate;
- Pull arm/pull claw is made of ultra-high-strength alloy steel. Double-acting hydraulic cylinder design.
- Hydraulic pump station built-in safety valve, maximum working pressure is 70MPa.
- Wheeled trolley for easy mobility.
- Can be configured with an extension head to increase the length of the piston





Compensation lever specifications



Model	HCP60	HCP100	HCP200	HCP250	HCP300
A (mm)	80	80	80	100	120
B (mm)	205	205	205	250	280
C (mm)	345	345	345	300	350
D (mm)	80	105	150	150	190

Technical parameters

Model	Puller Capacity T (Ton)	Cylinder Stroke (mm)	Length L(mm)	Width (mm)	Adjustable Height of Puller Center H(mm)	Minimum Opening mm	Pulling depth at min opening mm	Maximum Opening mm	Pulling depth at max opening mm	Power Source
HCP 60	60	250	2220	838	280-915	140	790	1000	650	380v/ 50Hz
HCP 100	100	250	2220	838	300-915	380	1066	1220	863	
HCP 200	200	250	2429	905	340-876	380	1160	1045	1039	
HCP 250	250	250	2450	986	340-876	380	1160	1220	970	
HCP 300	300	250	2503	1047	390-876	380	1160	1385	970	

MADE IN
CHINA



Pingyuan Jingke Hydraulic Co., Ltd

Address: Juncang Industrial Park, Dezhou city, Shandong China

Tel: +86 531 8289 9663

Email: TorcStark@gmail.com

Website: www.TorcStark.com